

The BACKDROP

Publisher: Benalla Theatre Company
P.O. Box 2, Benalla 3672

Editor: Molly Craig

Date: March 2014

BTC Web Site & Email: <http://www.benallatheatrecompany.org.au/index.html>
Benallatheatreco@yahoo.com.au



We're just about ready to start!

In a weeks time we'll be having our Information Night and then a few days after that auditions will be held, and then the fun begins!!

Information Night – Wednesday 12 March at 7.00pm at the Hut

Auditions – Sunday 16 and Monday 17 March.

Rehearsals begin – Sunday 23 March at 7.30pm

INFORMATION NIGHT

It's really a good idea to come to the Information Night, as we will be giving you a lot of...yep...information about the show, plus we will run thru the audition process. We know that auditions are really difficult, so we will go thru what you'll need to do, to give you the best chance to the best audition you can!

You'll be able to sign up for your audition, or if you're more interested in working on the production / backstage side of things, you can sign up for that too.

If you know of anyone who's sitting on the fence about being involved, bring them along so they can find out all about it.

AUDITIONS

Please contact **Emily** to book your audition or get some more information on 0400 639 536. We are auditioning on Sunday 16 March from 2pm till 6pm and then from 7.30pm onwards. Then on Monday 17 March auditions will be from 7.00pm onwards. If you are unable to audition on either of the days, we can organise to audition you earlier than that, so please talk to Emily about that and we'll see what can be done to help you out.

The show is full of lots of dancing and singing, and numerous roles for both males and females. The **script** is available to read, please contact Emily if you want to know what the show is all about!

The show will run over 2 weekends.

Performance dates and times:

Friday 25 July 8pm

Saturday 26 July 8pm

Sunday 27 July 2pm

Friday 1 August 8pm

Saturday 2 August 2pm & 8pm

CHARACTER LIST

- **Sid Sorokin**, the handsome new factory superintendent who falls in love with Babe, despite their being on opposite sides of the labour dispute central to the plot.
- **Catherine "Babe" Williams**, the leader of the Union Grievance Committee, who in turn falls in love with Sid.
- **Myron "Old Man" Hasler**, the strict head of the pajama factory who keeps a secret.
- **Gladys Hotchkiss**, Hasler's attractive, quick-witted secretary, who dates Hines and is chased by Prez.
- **Vernon Hines**, the factory timekeeper, who thinks Gladys flirts too much and, as a result is always jealous.
- **Prez**, the head of the union and a skirt chaser, despite being a married man.

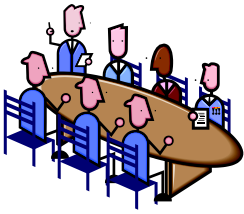
- **Mabel**, the mother hen of the factory and Sid's secretary.
- **Mae**, a loud-mouthed member of the Grievance Committee, who accepts Prez's advances, much to his surprise.
- **Pop**, Babe's kind and agreeable father.
- **Max**, A salesman.
- **Charley**, a worker in the factory and the handyman.
- **Joe**, a factory worker and Prez's right-hand man.
- **Brenda**, A member of the Grievance Committee.
- **Virginia**, a factory girl and union activist.
- **Poopsie**, a factory girl and union activist.
- **PLUS** a number of other smaller roles and chorus

PRODUCTION TEAM

With a later rehearsal start date, that has allowed a few of us to get going on the production side of things, from getting the ad and article sorted for the Ensign, to looking at what costumes we already have that may be suitable, to discussing the set design. At the moment we only have a few people jumping in to be involved and it would be great to see a whole lot more people become involved. The sooner we can get people on board, the sooner we can start organising, building, sewing, writing, taking pictures etc etc. It's really quite exciting to be involved on the production side of things and to see each of the areas go from just being ideas to become reality.

Here's the **Production Team List** – as you can see the list is slowly filling up, Thank you those people who have taken on a job and are already starting to undertake work. Contact Emily on 0400 639 536 if you are able to help.

Production Manager	
Production Secretary	Emily Watt
Production Treasurer	
Director	Molly Craig
Assistant to the Director	Wendy Hyland
Musical Director	Elaine Heywood
Choreographer	
Stage Manager	Wendy Hyland
Set Designer	Jamie Boatwood
Set Construction & Painting	Jamie Boatwood
Backstage during performances	
Publicity Team	
Props	Rhonda Ward
Costume Designer / Organiser	
Costume Sewing	
Sound Designer / Operator	Travas Hope (Soundalive)
Lighting Designer	
Lighting Operator	BPACC
Follow Spot Operators	
Front of House Coordinator/s	
Programme	Emily Watt
Show Photography	Kelvin Watt
Sponsorship	David Garrett & Laurie Webber
Prompt	



COMMITTEE FOR 2014

At our AGM held earlier this week, the following people were elected to the committee for the coming year. Thank you to everyone who nominated and put their hand up to be involved in the running of our company. Thanks go to **Sam Towns** for her contributions to the committee in the past year.

Congratulations go to **Kelvin Watt** who received the President's Award for his commitment to and work for the company. Well done Kelvin!!

President	Molly Craig
Vice President	David Garrett
Secretary	Emily Watt
Treasurer	Jim Tullberg
Committee	Jamie Boatwood
	Elaine Heywood
	Kelvin Watt
	Laurie Webber
	Wayne Wilson

MEMBERSHIP FORM & SUBS FOR 2014

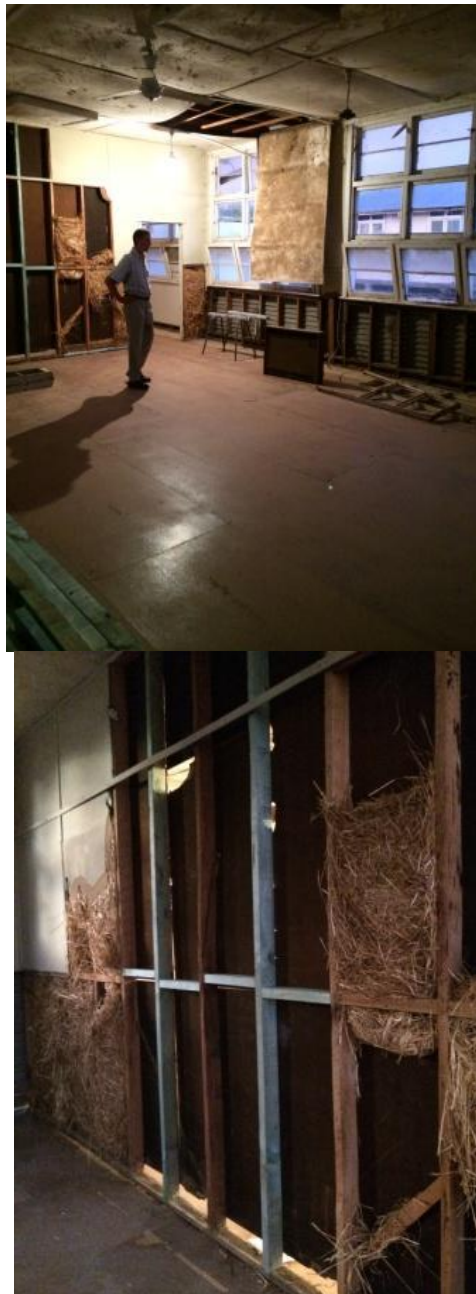
At the meeting the following prices were voted and agreed upon for the coming year. The membership form is on the last page, please fill it out and return with your money. The form is part of our new rules of association and needs to be completed. You will receive a membership acceptance form after your form and payment are processed.

Adults	\$30
Student / Concession	\$25
Associate (and students under 15)	\$15

SETS AND PROPS HUT

As you may or may not know our sets and props hut is in a bad state of repair. For over a year now the committee has been looking and investigating different options for us. We decided to fix the hut and this of course is going to cost a lot of money. The floor is in the midst of being replaced by a builder and then we will start the work of repairing other things that we can do. So this is going to be a long process. Thank you to the sub committee and committee for their work...so far....and thank you in anticipation for those working bees coming up where we ask you to come and help put the hut back together again!

Below are some photos of the work in progress taken last week. Nice photo bombing Jim! It was wonderful to be able to go into the hut and walk safely without holes...and you may also notice not more concrete blocks in the front section to trip over – hooray! As you can see, the floor looks fantastic, but there's still so much more for us to do. But wont it be fantastic when its done!



WE HAVE A NEW WEBSITE ADDRESS

After some problems with our old address, we now have a new one, so please update, or add to your bookmarks:

www.benallatheatrecompany.org.au

BENALLA THEATRE COMPANY INC **MEMBERSHIP APPLICATION FORM 2014**